

, , , ,

100085

0

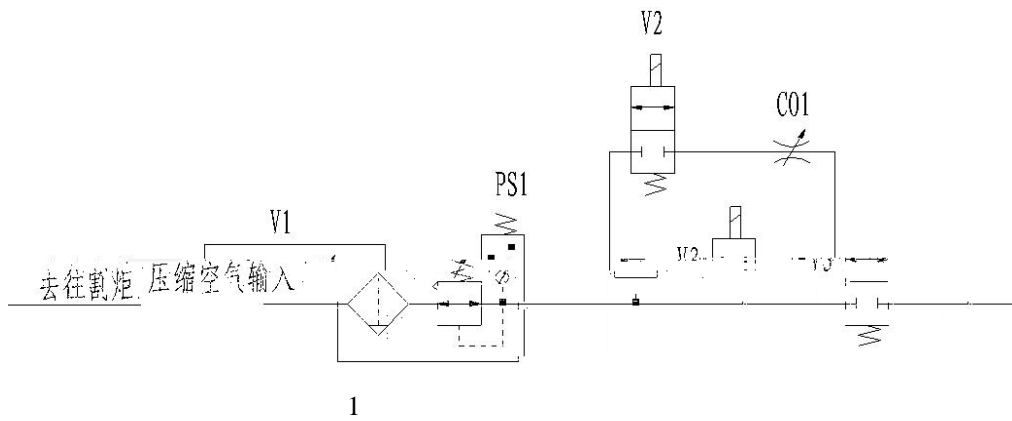
(1)

160A

1

120A

1



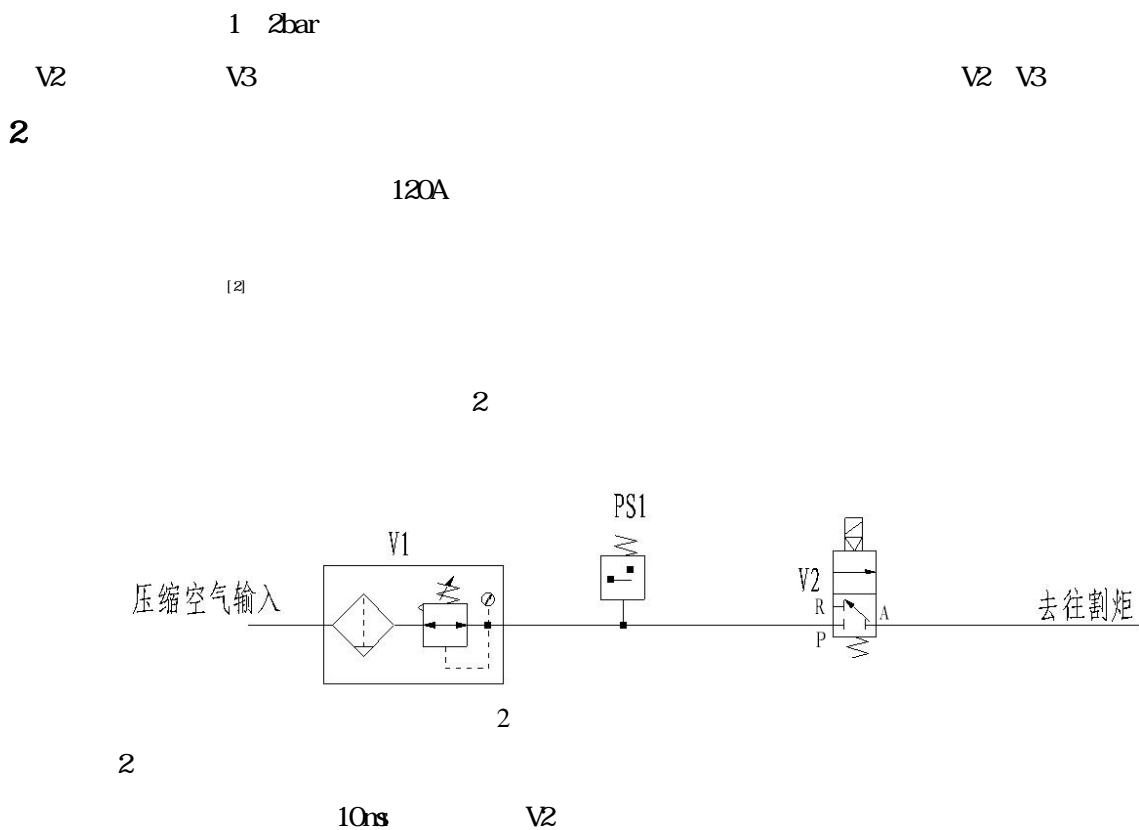
1 V1

PS1

V2

C01

C01



5 30S

V2

V2 P A  
V2 R A

V2 P A  
LCK-60 LCK-120

V2 P A

99

3

[1]

[M]. : . 1996

[2]

[J]. Vol. 40 No. 9 2010 43-45

1977-

13621391013